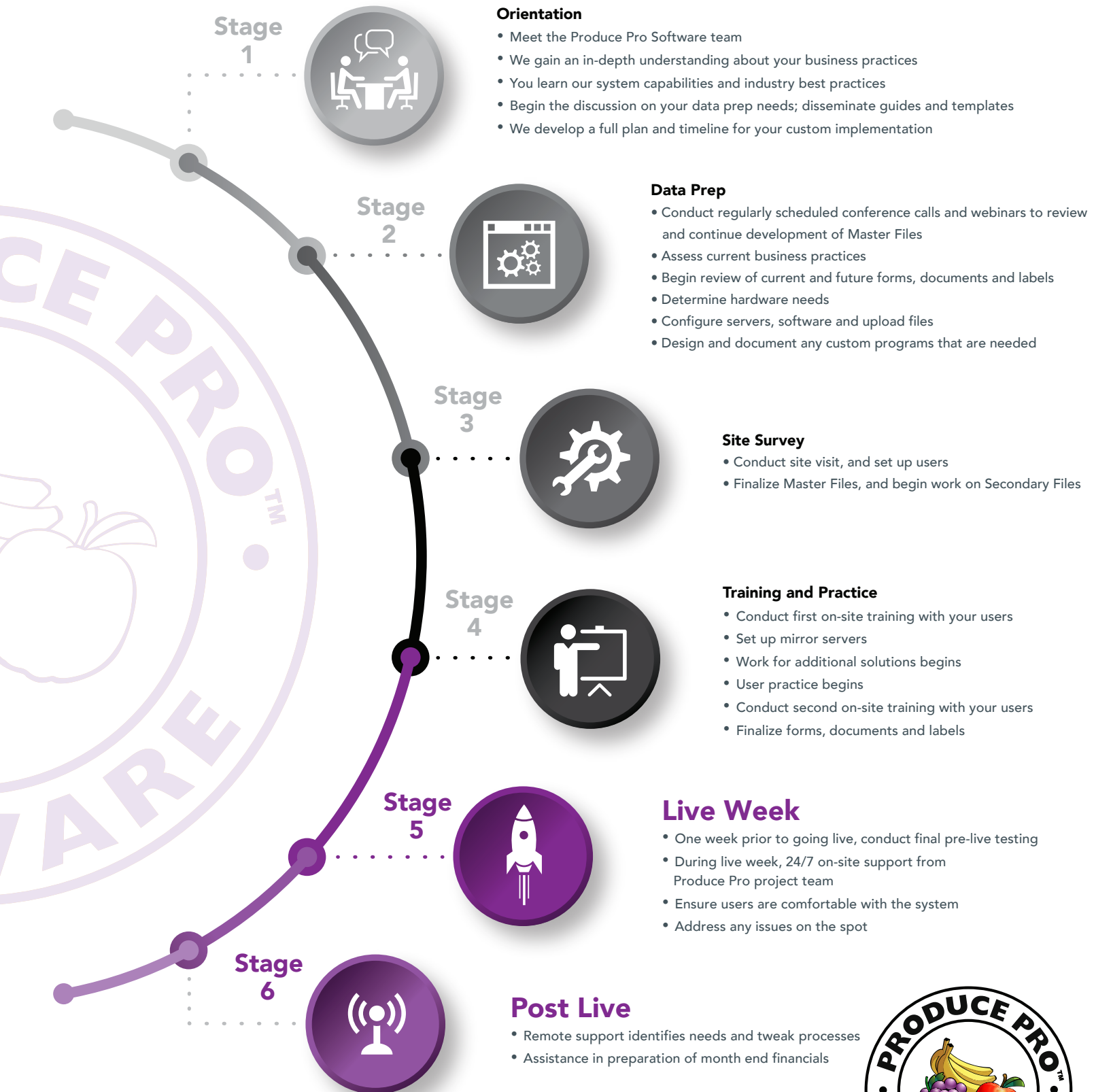
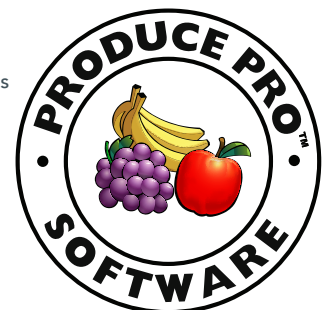


Implementation Process At A Glance



Stage length may vary.



FIRST LAST

In Support, Training and
Tailored Solutions.

Implementation You
Will Ever Need.

Before Implementation, We Learn Your Business

The Produce Pro Software team is dedicated to making sure you are satisfied with every phase of our relationship, starting with implementation. We take the time to learn every facet of your business. That learning enables us to recommend and design robust, stable hardware solutions, with the end goals of maximized uptime, stability, high performance and reliable backups.

During Implementation, We're Always Accessible

Your success is so important that Produce Pro assigns a team of implementation specialists to work with you throughout the process. These software deployment experts make sure our software aligns with the way you do business. We also train your team with proven methods to help them effectively learn and use the software every day.

After Implementation, The Support Continues

After implementation, you'll have access to our expert support team at any time. It's all designed to enhance your operations and ensure that the final transition runs smoothly for your unique needs.

10 Reasons Why Our Implementation is the Best

1. We gain an in-depth understanding about your business practices
2. Produce Pro aligns our system to your needs
3. We work with you to develop a hardware solution
4. You'll learn industry best practices
5. Your business gets a dedicated team
6. There are hands-on classes for end users
7. We use your real data and scenarios to develop practice exercises
8. You'll have on-site, around-the-clock specialists
9. They can address any issues right on the spot
10. We provide ongoing support and training

Contact Us Today to Learn More

630.395.9600 • sales@producepro.com • producepro.com



Chicago • Los Angeles • Philadelphia • Austin